



STATE OF THE AGA

Findings From RABEP's Recent
and Ongoing Monitoring Efforts

Henry Fandel, Sarah Faegre, Renee Ha, Dylan Hubl, and Andria Kroner



RABEP Aga Project Goals

- Track population trends
- Monitor nesting efforts
- Identify causes of mortality
- Assist with SDZG egg/nestling collections
- Monitor release birds
- Perform public outreach



RABEP Aga Project Goals

- Track population trends
- Monitor nesting efforts
- Identify causes of mortality
- Assist with SDZG egg/nestling collections
- Monitor release birds
- Perform public outreach



Outreach



Rota Agricultural Fair 2015



Classroom Outreach 2017



Elementary School Science Fair

Outreach



Students from Guam participate in an Aga release



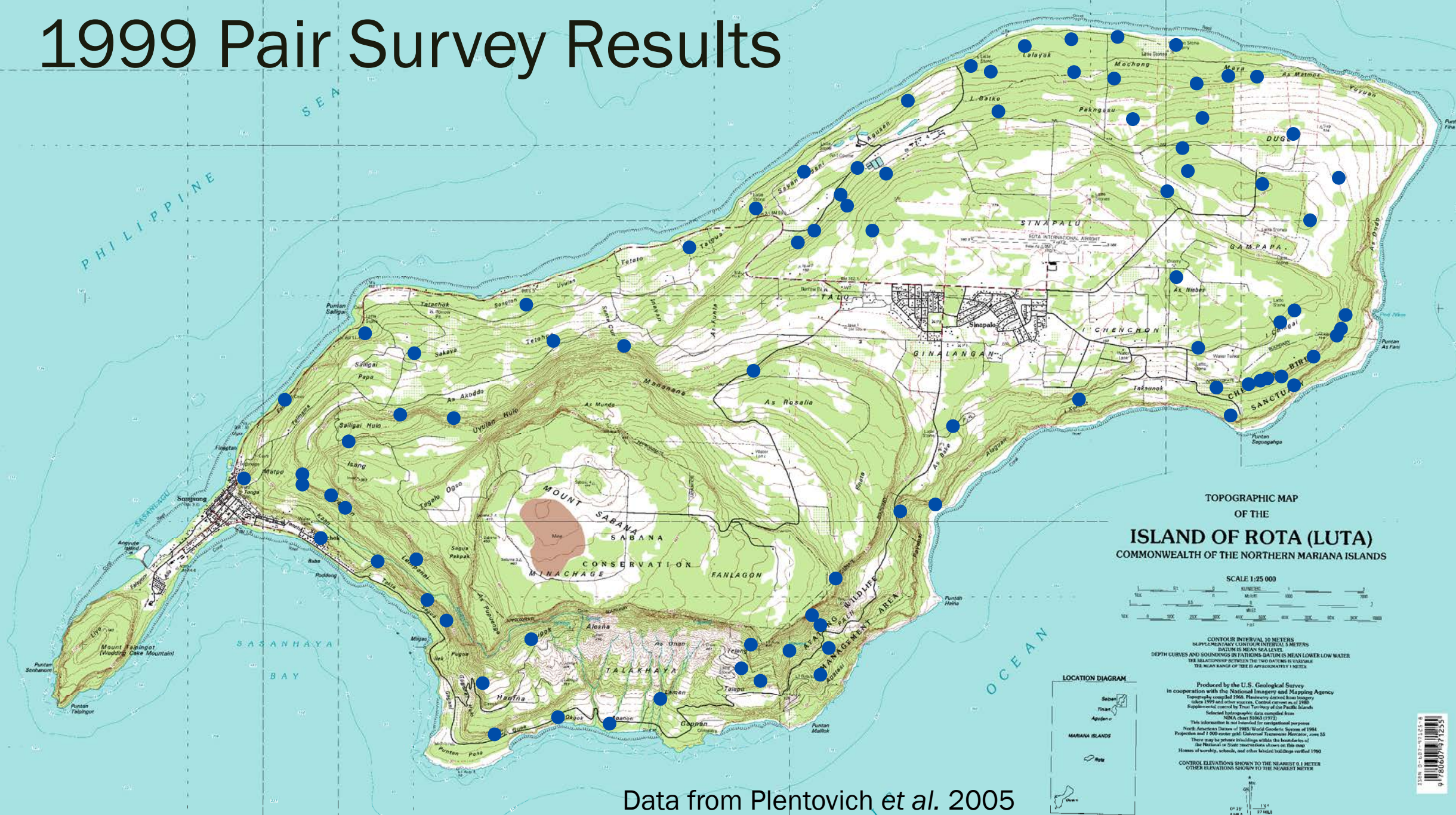
Rota Agricultural Fair 2015

1999 Pair Estimate

- 117 breeding pairs across Rota
- 85 Pairs were observed in 5 study plots and incidentally elsewhere
- Researchers used pair-density within plots to estimate number of pairs in un-surveyed crow habitat
- Surveys occurred between 1996-1999



1999 Pair Survey Results



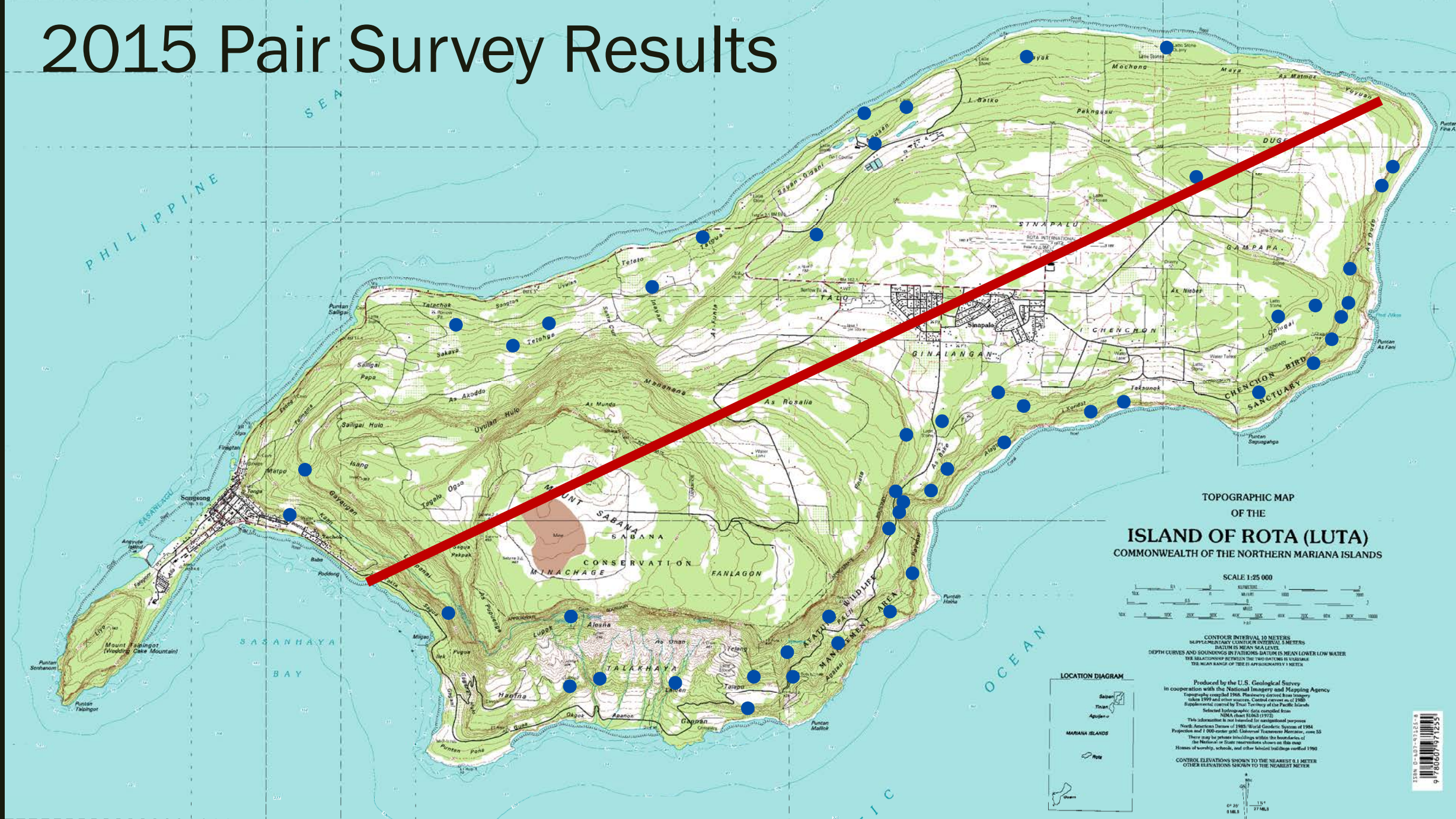
Data from Plentovich et al. 2005

2015 Pair Estimate

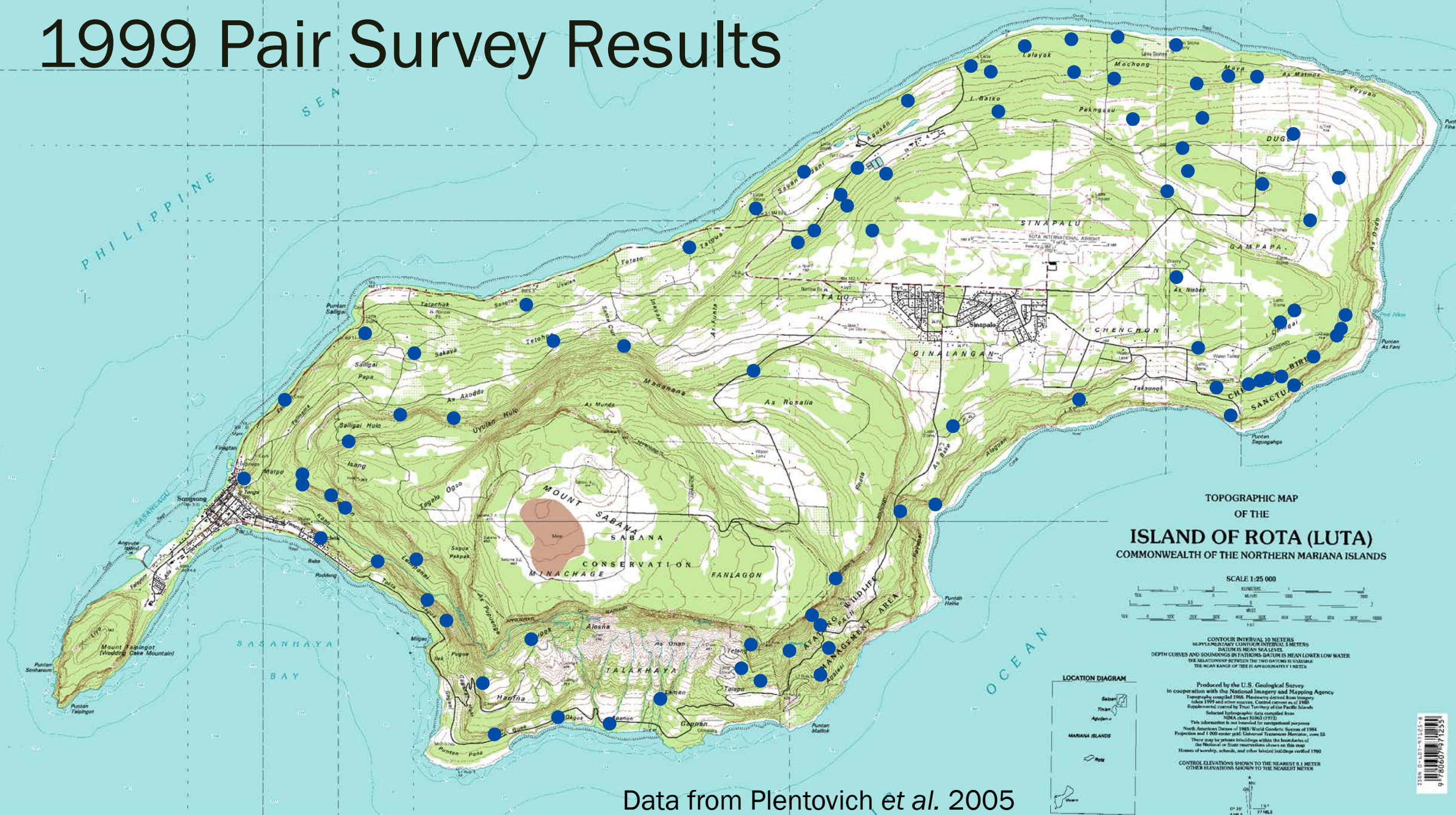
- 50 Pairs
- Surveyed all occupied and unoccupied crow habitat on Rota
- Visit each area at least once per month from September through March



2015 Pair Survey Results

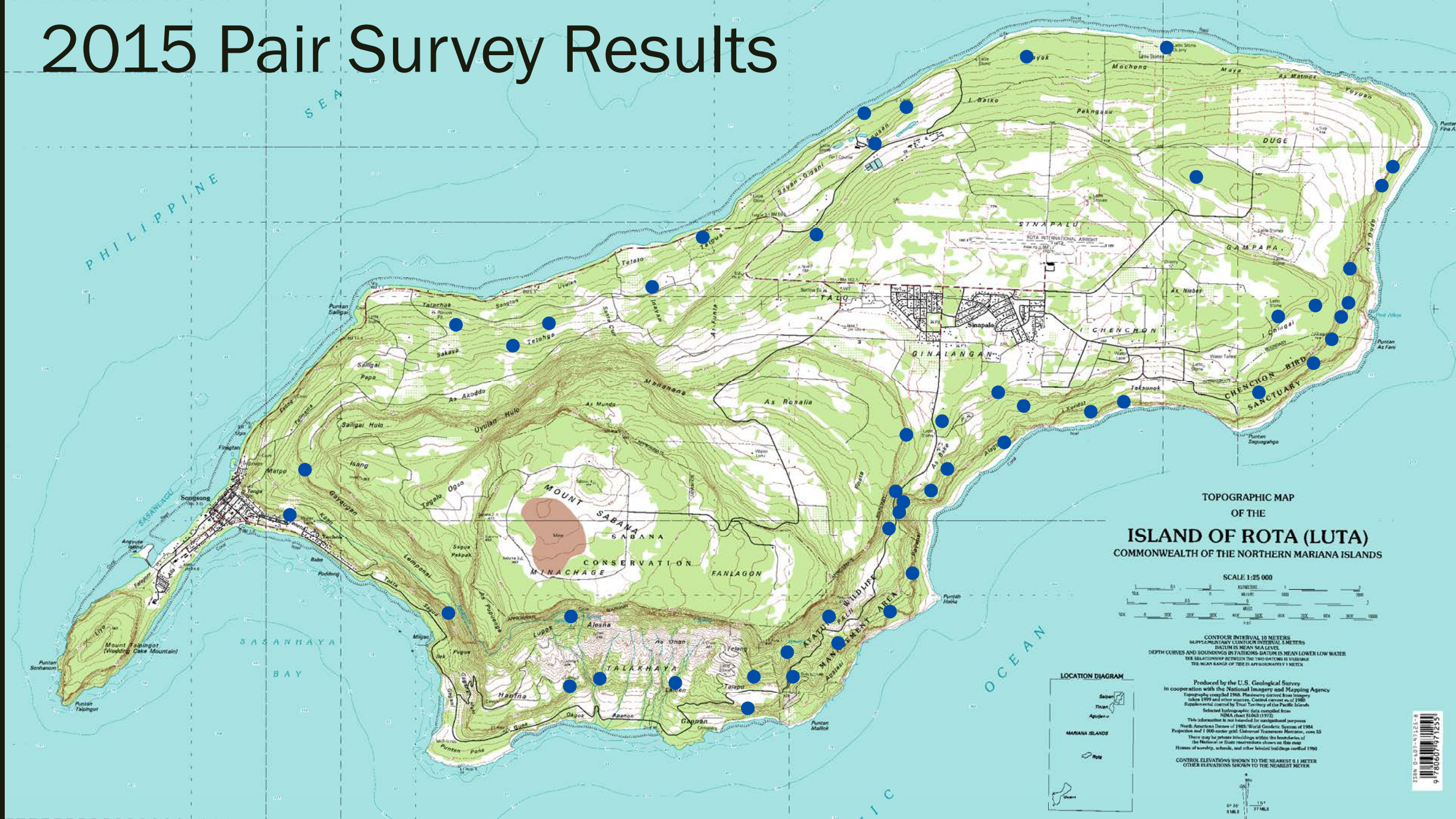


1999 Pair Survey Results

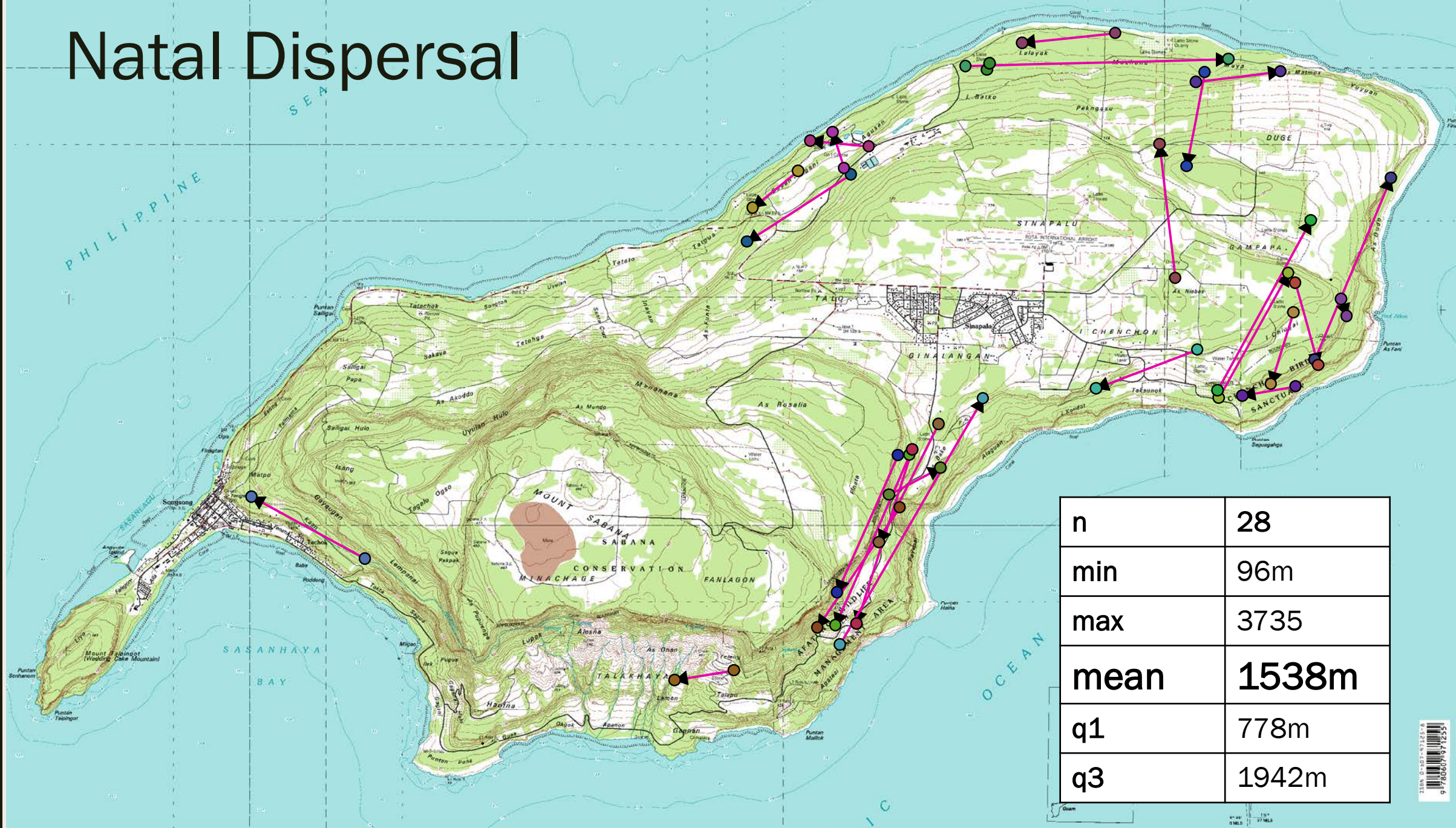


Data from Plentovich *et al.* 2005

2015 Pair Survey Results

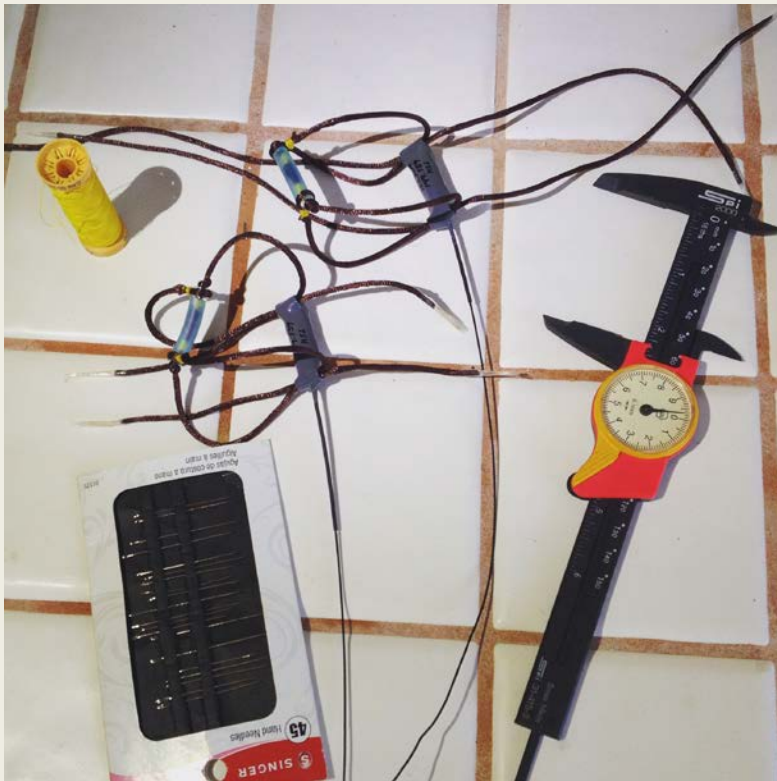


Natal Dispersal



n	28
min	96m
max	3735
mean	1538m
q1	778m
q3	1942m

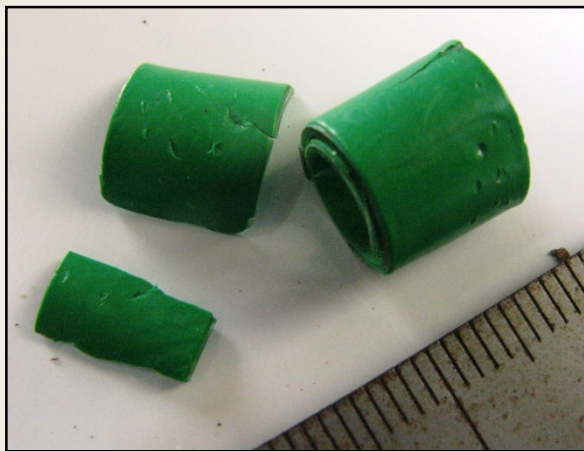
Mortality



Harnesses hot off the press



Fitting a radiotransmitter harness on an adult Aga



Mortality: Incidental Findings

- Coconut crabs (*Birgus latro*) depredate Aga and other vertebrates on Rota



THE ECOLOGICAL SOCIETY OF AMERICA

Frontiers in Ecology and the Environment

[Explore this journal >](#)

Natural History Notes

Ruler of the atoll: the world's largest land invertebrate

Mark E Laidre

First published: 1 November 2017 [Full publication history](#)

DOI: 10.1002/fee.1730 [View/save citation](#)

Cited by (CrossRef): 0 articles [↻ Check for updates](#) [⚙ Citation tools ▼](#)



Mortality: Emerging Patterns

- Pattern of inflammation in necropsy results
- 3 of 4 captive birds have shown skin inflammation
- 7 of 11 wild birds have shown inflammation of internal organs



Summary

- Outreach is integral!
- As of 2016: 50 breeding pairs
- Most pairs are on South side of Rota
- Most known mortalities have involved feral cats, a mysterious affliction, or possibly both.



Many Thanks!

- University of Washington
- CNMI DFW
- USFWS
- Renee Ha, Sarah Faegre,
Dylan Hubl

